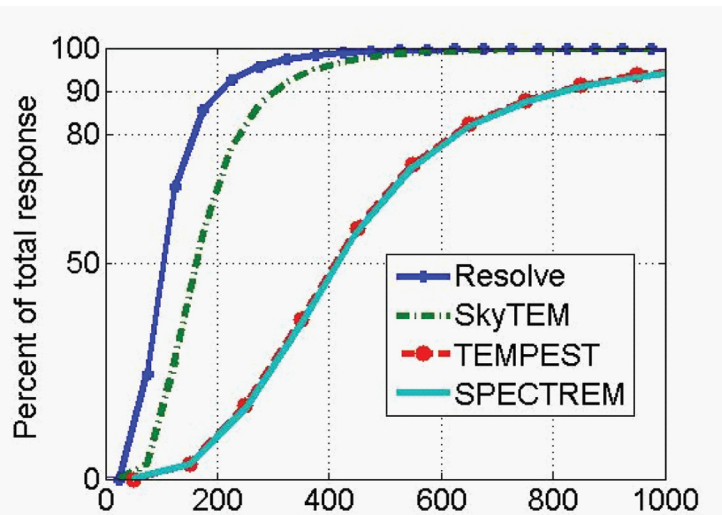


Fast 3D Inversion of All Types of Geophysical Data Using Moving Sensitivity Domain Approach

TechnoIMAGING®

EMVision® proprietary software by TechnoIMAGING® allows for fast 3D inversion of all types of geophysical data using the Moving Sensitivity Domain Method:

- The sensitivity domain of a geographical system is much smaller than the typical survey area.
- For the purpose of modeling, each sensitivity domain is treated as a self-contained 3D model.
- EM responses and sensitivities for each domain are computed separately.
- The results of these separate calculations are combined and superimposed for all data into a single, sparse sensitivity matrix for the entire 3D Earth model.



Examples of subdomain size for different AEM systems. The sizes were calculated using system listed and a half space of 100 ohm-m.

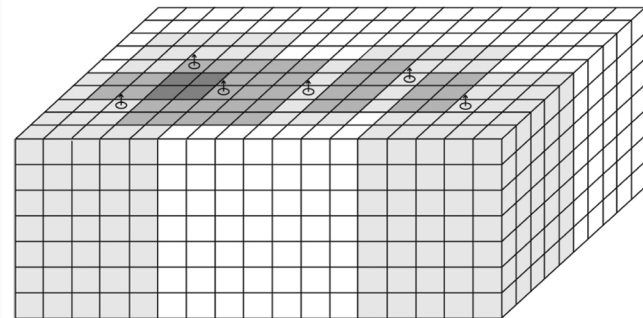


Diagram of moving sensitivity domain approach. Shaded areas indicate a single subdomain. In a true survey, every cell would have coverage from multiple sounding locations.

www.technoimaging.com

4001 S 700 E, Suite 500 | Salt Lake City, UT 84107 | USA

Phone: +1 801 264-6700 | Fax +1 801 264-6701

emvision@technoimaging.com